

Rotherhithe New Road, London, SE16 2SD

A spacious two bedroom apartment located a short walk away from both Canada Water and Surrey Quays station.

The apartment features a generous living room with space to dine, a separate kitchen with access to a private balcony, two well-sized double bedrooms with storage, and a stylish family bathroom.

Additional storage can be found in the hallway.

The property is close to many local amenities such as a leisure centre, shopping centre, supermarket, local cafes, local restaurants, and the greenery of Southwark Park.

- Spacious Two bedroom Apartment
- Close to Local Amenities
- Plenty of Storage
- Private Balcony with Views of The London skyline
- Furnished

Alex & Matteo
ESTATE AGENTS

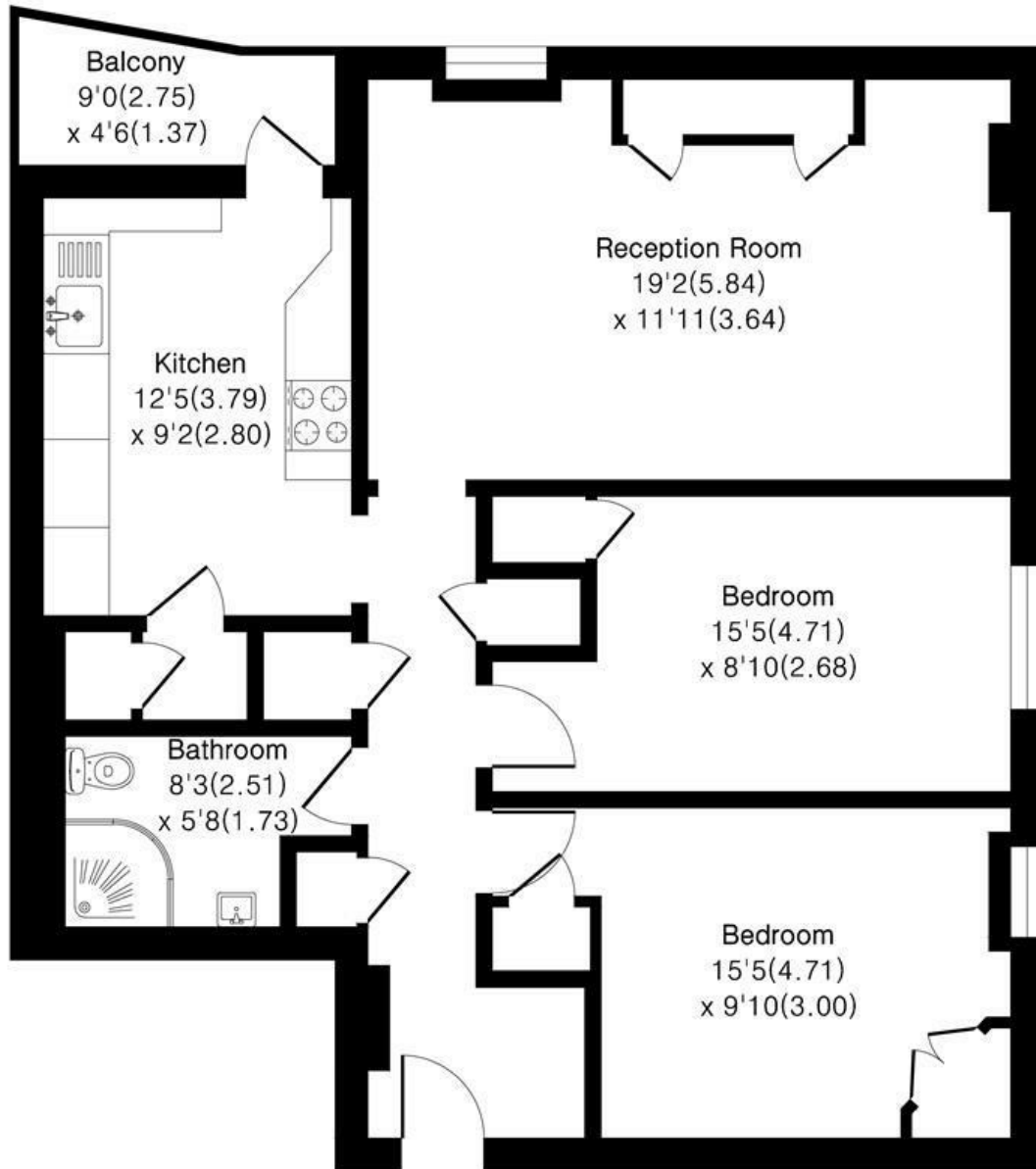
£2,100 Per month

130 Tissington Court, Rotherhithe

New Road London, SE16 2SD

Approximate Area = 815 sq ft / 76 sq m

For identification only - Not To Scale



15th Floor

Floor plan Produced in accordance with RICS Property Measurement 2nd Edition.
Incorporating International Property Measurement Standards (IPMS2 Residential).

Energy Efficiency Rating		Current	Potential
Very energy efficient - lower running costs			
(92 plus) A			
(81-91) B			
(69-80) C			
(55-68) D	61	61	
(39-54) E			
(21-38) F			
(1-20) G			
Not energy efficient - higher running costs			
England & Wales		EU Directive 2002/91/EC	